



2025 ANNUAL REPORT



A year of growth and commitment to children's
mental health

REFLECTING ON 2025 — A WORD FROM OUR EXECUTIVE DIRECTOR, MO BASENBERG

In 2025, Safe Passage reached a transformative milestone by launching our in-house mental health program. The impact has been monumental, fundamentally increasing our capacity to serve child survivors of abuse. By shifting from an outsourced model to an integrated clinical team, we increased the number of children receiving on-site therapy from just two in 2024 to forty-four in 2025. Similarly, crisis intervention services surged from twelve children in 2024 to seventy-nine in 2025. Providing this trauma-informed care free of charge ensures that we are delivering the deep, lasting healing every child deserves.

The addition of a Clinical Director and staff therapist has created a positive ripple effect throughout our entire organization. Our team now benefits from a culture of wellness, featuring initiatives like Mental Health Awareness Month activities, family-inclusive gatherings, and a “calm cabinet” stocked with snacks and sensory tools for stressful days.

Beyond our walls, we have strengthened the broader clinical community through quarterly networking meetings and collaborative site tours. Throughout 2025, our clinical team also led essential training for our multidisciplinary partners, including specialized sessions on recognizing the warning signs of a mental health crisis. As these improvements become a permanent part of the Safe Passage milieu, I look toward 2026 with a steadfast commitment to further strengthening the support we provide to child victims in our community.

Maureen “Mo” Basenberg, MPA



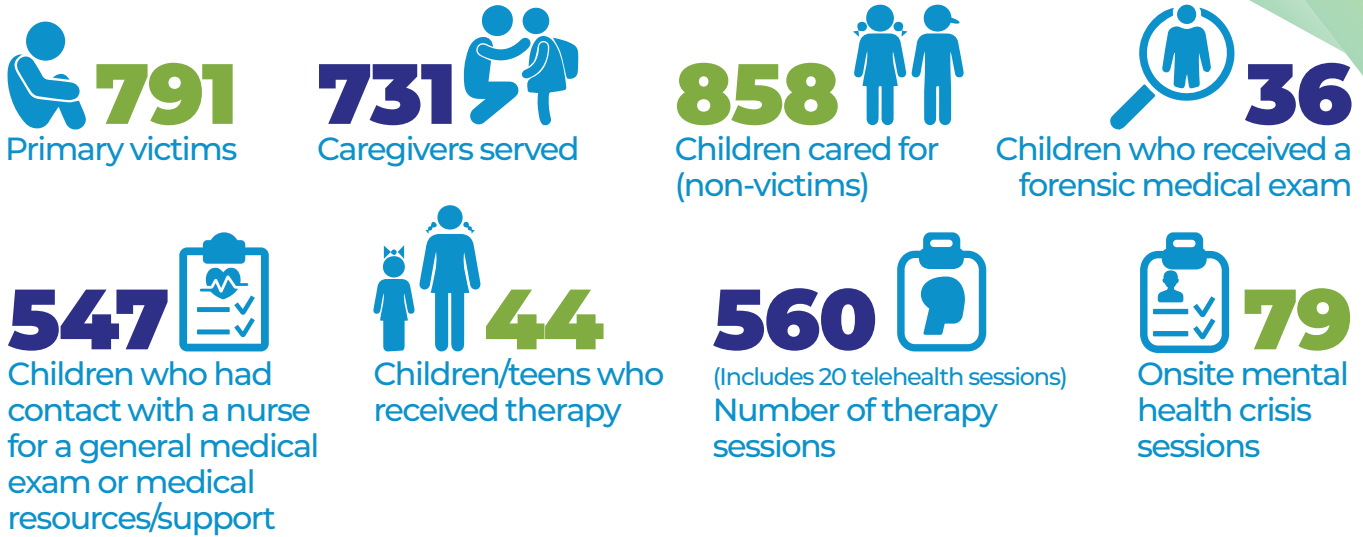
“
The whole center is set up in a way to provide comfort to those who enter the building from the decor, to the music, to the staff. Everyone was very warm and the process went better than anticipated.

– Caregiver

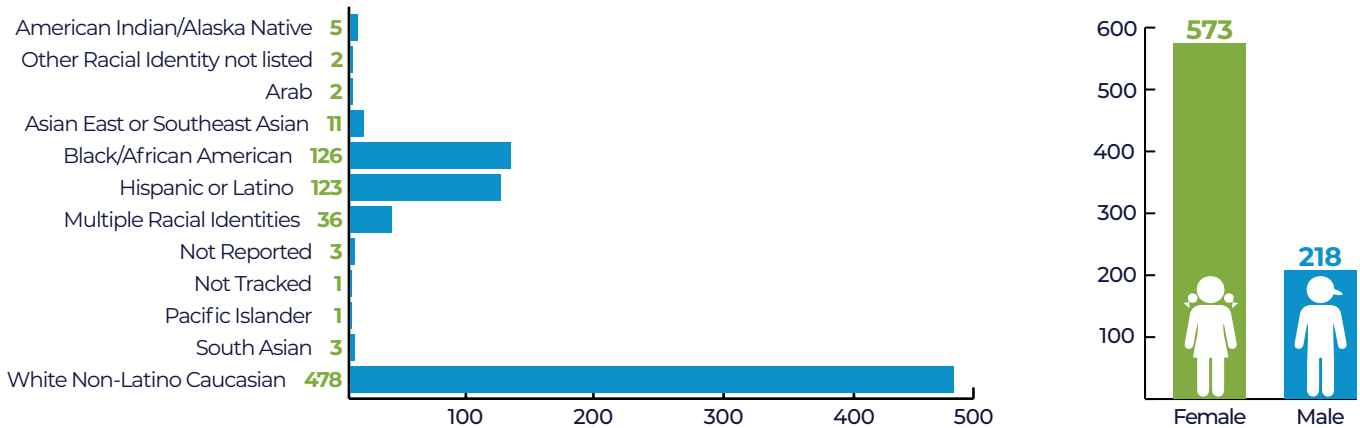
“
Everyone was very nice and welcoming, made me feel comfortable and safe enough to share freely and openly without judgment or ridicule. It was very peaceful and the activity room was absolutely amazing. Also all the seats are SUPER comfortable.

– Child

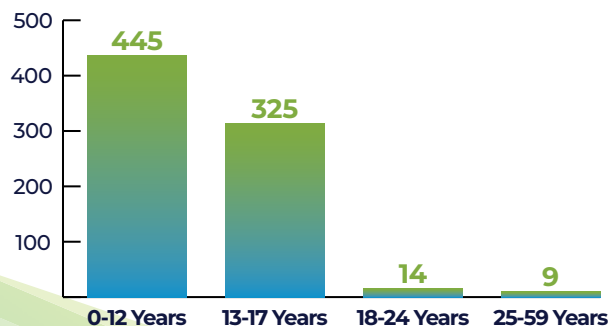
Impact by The Numbers



Race and Gender of Victims Served



Age of Victims Served



**Note: these numbers are based on the 2025 calendar year

OUR TEAM... AT THE HEART OF ALL WE DO.



Our staff works intense child abuse cases daily while providing care, compassion, and quality services. They are dedicated, resilient, and courageous, and we are so proud to call them our Safe Passage Team!



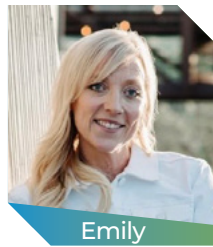
Aracelli



Chloe



Courtney



Emily



Haley



Janette



Laura



MacKenzie



Mo



Nicole



Stephany



Steffani

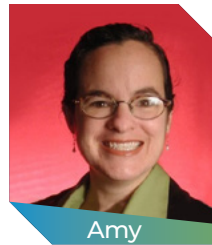
Contract Workers



Vicki
Grant Writer
L Professional Writing



Diane
Accountant
Crystal Clear Solutions



Amy
Public Relations
Amy Triandiflou Public Relations



MacKenzie
Spanish Speaking
Forensic Interviewer
Independent Contractor

Not pictured:
Dan, Tech Support
DMR Solutions

STORY OF IMPACT FROM OUR NEW MENTAL HEALTH PROGRAM



When Emma first came to Safe Passage, she was just 11 years old and carrying a weight far heavier than any child should bear. She arrived with active suicidal thoughts, deep withdrawal from her peers, and a painfully low sense of self-worth. Nights were especially hard. Overwhelmed by fear and persistent nightmares, Emma was unable to sleep alone and spent months sleeping each night on the floor of her parents' bedroom, seeking safety wherever she could find it.

From the moment Emma came to Safe Passage, we worked closely with her and her family to stabilize the immediate crisis while beginning trauma-informed therapy designed to help her rebuild a sense of security.

Slowly, meaningful changes began to take shape.

Today, Emma is sleeping in her own room again—a milestone that once felt impossible. She reports no active suicidal thoughts, and the nightly nightmares that once ruled her evenings have eased. Her parents share that she is doing better in school, engaging more confidently with teachers, and showing curiosity about learning again.

Emma has also begun to reclaim parts of childhood that had slipped away. She has expressed interest in returning to her previous sport activities, reconnecting with friends, and spending time with peers. These are steps that reflect a renewed sense of confidence and belonging. In session, her growth is unmistakable! Where there was once fear and self-doubt, there is now resilience, pride, and a growing belief in herself.

Emma's story is a reminder that healing is possible, even in the midst of profound struggle. She is still on her journey, but today she is safer, stronger, and rediscovering who she is.

COMMUNITY SUPPORT

FUNDRAISING LUNCHEON

On April 17, 2025 we held our annual fundraising luncheon at Safe Passage. We announced the launch of our new in-house mental health program and shared about the vital “thread” that runs through the work of a child advocacy center: mental health.

We raised nearly \$75,000 from this year’s event!



EMPTY STOCKING FUND

Safe Passage is one of 20 organizations chosen to be part of the Empty Stocking Fund (ESF). ESF provided resources to local health and human service agencies in the Pikes Peak region on the front lines of helping people in crisis and assisting others in attaining self sufficiency. **We are honored to be part of ESF and ask that you support this initiative each year!**



CLAY TIME

On November 7, 2025 we held our annual clay shooting event at Pikes Peak Gun Club. **We raised \$21,500 from this year’s event** and had a great turnout with 18 teams coming out to support Safe Passage kids!



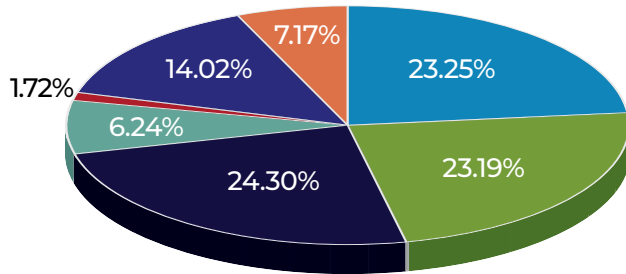
SUPPORT SAFE PASSAGE:



1. Scan QR code
2. Text to Give: 202-858-1233 Short-code: SafePassageCAC
3. Visit our website: www.safepassagecac.org

FINANCIAL OVERVIEW

REVENUE BREAKDOWN

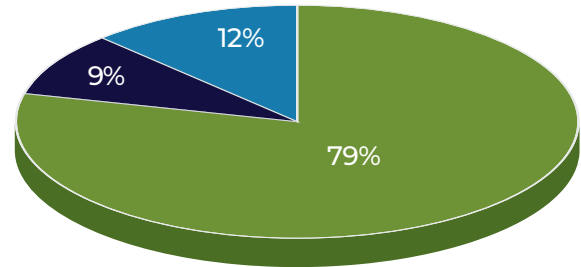


■ Community Donations -	23.35%
■ Grants/Foundations -	23.19%
■ Government Grants -	24.30%
■ Special Events -	7.17%
■ In Kind -	1.72%
■ Rent from Partners -	14.02%
■ Service Contracts -	6.24%

Total Revenue: \$1,588,691.90

***Note-these numbers are based on the 2025 calendar year*

EXPENSES BREAKDOWN



■ Programs -	79%
■ Administrative -	9%
■ Fundraising -	12%

Total Expenses: \$1,814,579.44

LEADERSHIP

OUR DEDICATED BOARD OF DIRECTORS

PRESIDENT

Jenny Johnson
Community Member

VICE-PRESIDENT

Annie Snead
*Executive Director
of Philanthropy and
Community Relations
Ent Credit Union*

SECRETARY

Amy Cavender
*Senior Loan Officer
E Mortgage Capital*

TREASURER

Sean McKeown
*Partner Technical Manager
Cisco Systems*

Kelson Castain
*Deputy District Attorney,
4th Judicial DA's Office*

Rob Giunta
*Business Banking
Relationship Manager
US Bank*

Pamela Roberts-Mora
*Chief Operations Officer
Sachs Foundation*

Nick Stremble
*Senior Director of
Emergency Services
UC Health*

Kevin Farley
*Director of Marketing &
Communications
Pikes Peak Community
Foundation*

Stan Gradisar
Attorney

Jen Schreuder
*Senior Communications
Specialist
City of Colorado Springs*

Jared Veteto
*President Cogitic
Corporation*

LEADING WITH HEART AND VISION: A WORD FROM OUR BOARD PRESIDENT, JENNY JOHNSON



Greetings! Another year has flown by at lightning speed. Safe Passage continues to grow and offer more services. The mental health program - headed by two exceptional mental health providers - was at capacity in just two months. This demonstrates the incredible need that exists in our community for trauma-informed mental health care. In addition, our community outreach efforts continue to expand with a Director of Partner Relations and Outreach. Both of these initiatives are critical to providing comprehensive services to the families and victims of sexual abuse in the Pikes Peak region. Because of you, Safe Passage has been able to make them possible despite cuts to federal funding. You recognize the need to support those in our community experiencing sexual abuse. Thank you on behalf of the board, staff, families and victims.

I joined the board in January 2023. I had the privilege of becoming Vice President in 2025 and President in 2026. Safe Passage is an inspiring organization that does the most difficult work. I look forward to continuing to be a part of it.

As we look to the future, we see a rapidly growing Pikes Peak region. We have an eye towards what this can mean for the children and families in our community and we will stay committed to keeping their safety in mind.

The children - the future of our community - depend on us to be there for them. Please join us by continuing to support them on their journey from victims to survivors!